

HOW TO SET UP CULTURE PLATES

Before plating, check that all equipment is present and accessible:

- o Culture plates
- o Sterile swabs
- o Milk samples and sample rack
- o Clean disposable gloves
- o Gauze soaked in 70% alcohol

Clean work space with gauze and 70% alcohol to eliminate environmental bacteria that otherwise might contaminate the culture plates. When setting up culture plates be sure to always wash your hands and wear clean disposable gloves.

Thaw any frozen samples to room temperature. This will require setting the samples out on the lab bench for at least an hour prior to plating. Do not thaw frozen samples using hot water or the microwave.

Label the side of the culture plate with cow ID, affected quarter and the date.

Thoroughly mix the milk sample by inverting it several times. Dip a sterile cotton swab into the sample and wait 5 seconds for it to become saturated with milk. Spread the swab over the media surface using a back-and-forth motion from the top down. Redip the swab in the milk sample for each section of the culture plate. Immediately cover the plate and cap the milk sample after plating to avoid contamination.

Freeze milk samples so they are available for confirmatory testing later.

Lay the plates flat on the work surface for 5-10 minutes to allow the milk to soak into the agar.

Invert all plates so the agar side is up so that condensation that collects on the lid will not drip onto the agar and disrupt bacterial growth.

Place the upside-down plates in the incubator and incubate at 37 degrees Celsius (98 degrees Fahrenheit) for 24 hours. The bacteria will need a minimum of 24 hours to grow before reading results.

Throw away any garbage and disinfect the work space.

HOW TO SET UP CULTURE PLATES

Have all materials ready to use:

Milk samples

Culture plates

Sterile swabs

Gloves

Gauze soaked in 70% alcohol

Biohazard bags

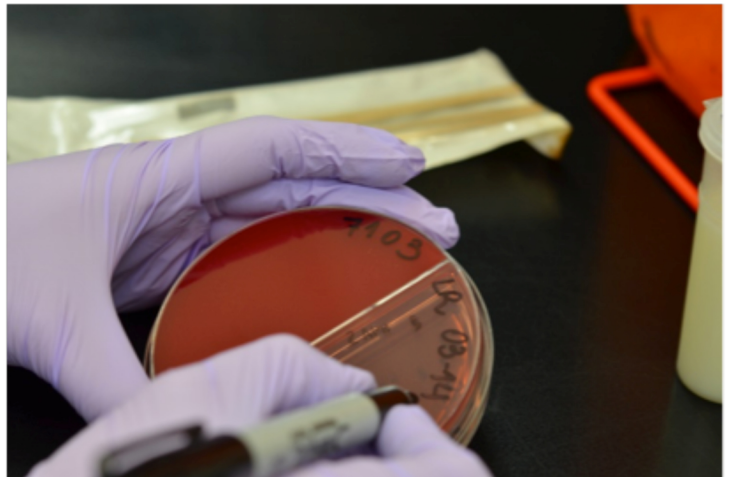


Label the side of a new on-farm culture plate with:

Cow ID

Affected quarter

Date



Thoroughly mix the milk sample by inverting it several times.

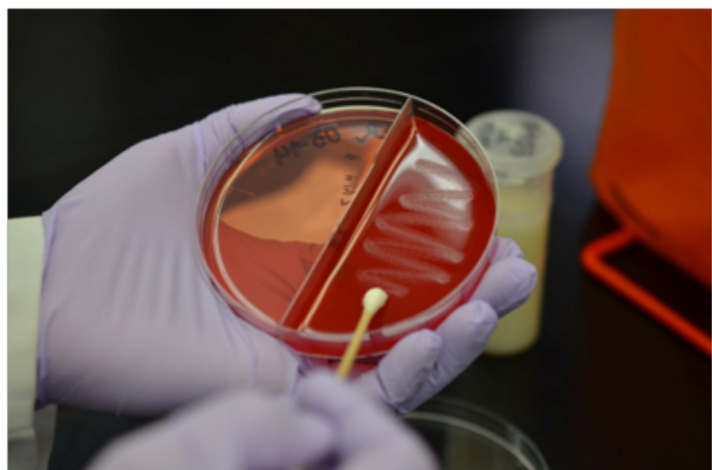


HOW TO SET UP CULTURE PLATES

Dip a sterile swab in the milk sample and roll it until swab becomes completely saturated with milk.



Inoculate one section of a culture plate using a zigzag streaking pattern.

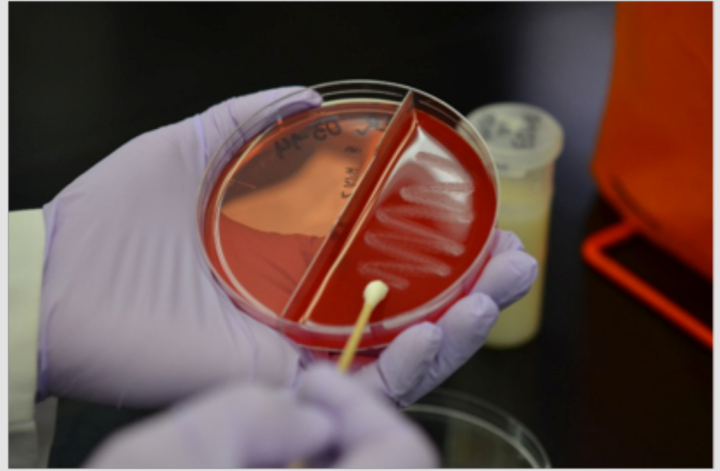


Re-dip the swab in the milk sample before inoculating each section of the culture plate.



HOW TO SET UP CULTURE PLATES

Inoculate the resting sections of the culture plate.



Place the inoculated culture plates in the incubator upside down (lid facing the shelf) and incubate plates for 18 to 24 hours at 37°C.

