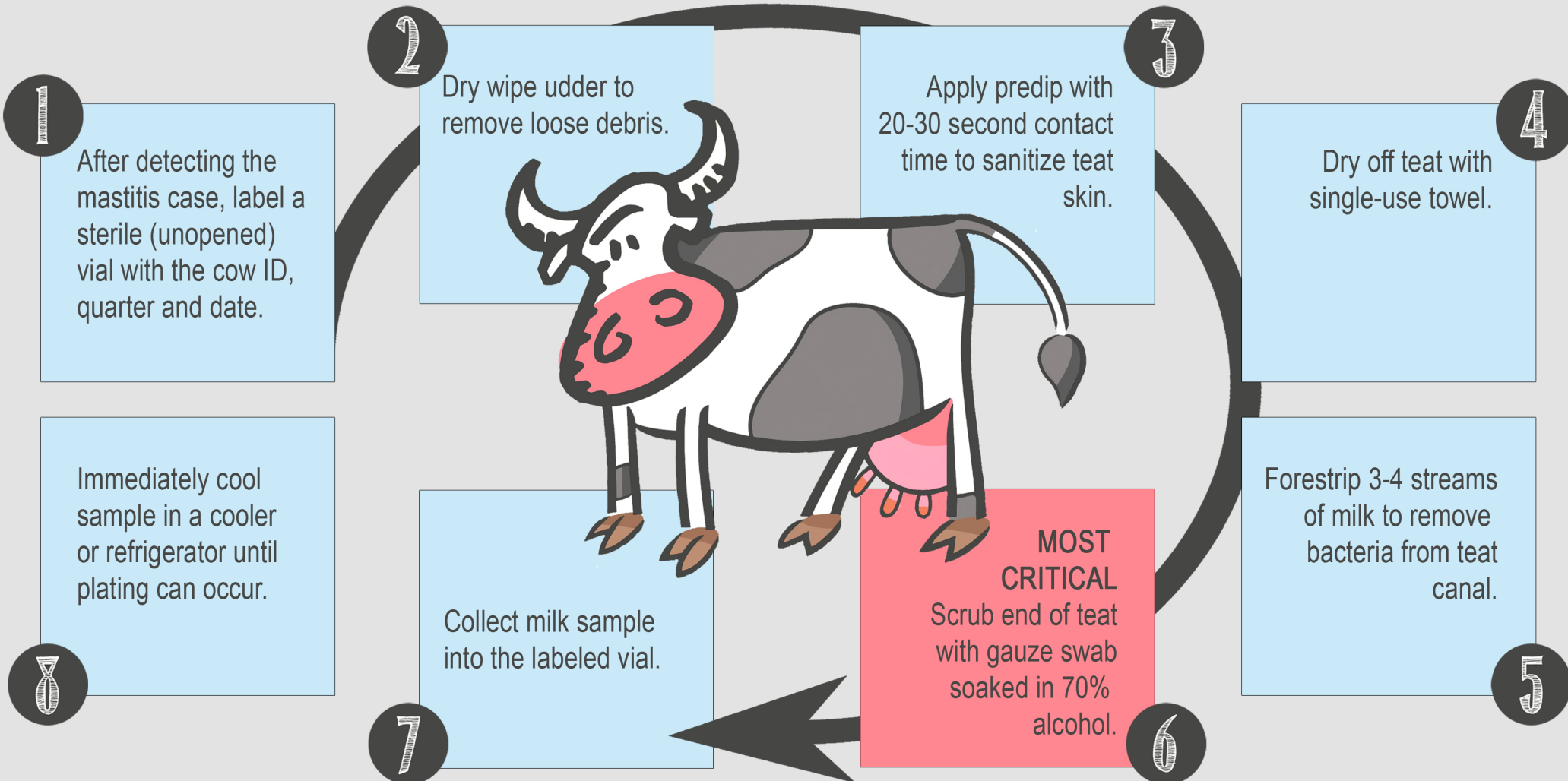


HOW TO COLLECT A STERILE MILK SAMPLE

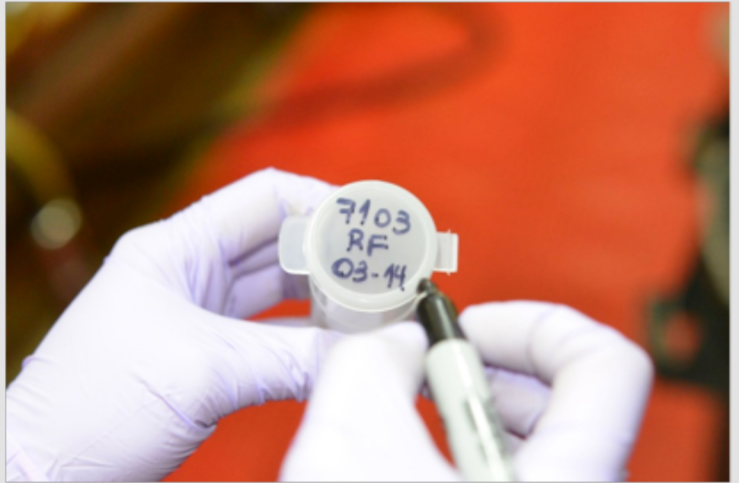
The entire process of performing on farm culturing is absolutely dependent on how well the milk sample was collected. If this step is not performed correctly, then the rest of the process will be meaningless. Follow these steps to help collect a sterile milk sample.



HOW TO COLLECT A STERILE MILK SAMPLE

1

After detecting the mastitis case, label a sterile (unopened) vial with the cow ID, quarter and date.

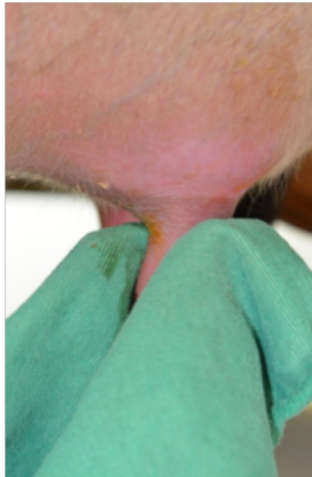


2

Dry off teat with single-use towel.

3

Apply predip with 20-30 second contact time to sanitize teat skin.



4

Dry off teat with single-use towel.

5

Forestrip 3-4 streams of milk to remove bacteria from teat canal.



HOW TO COLLECT A STERILE MILK SAMPLE

6

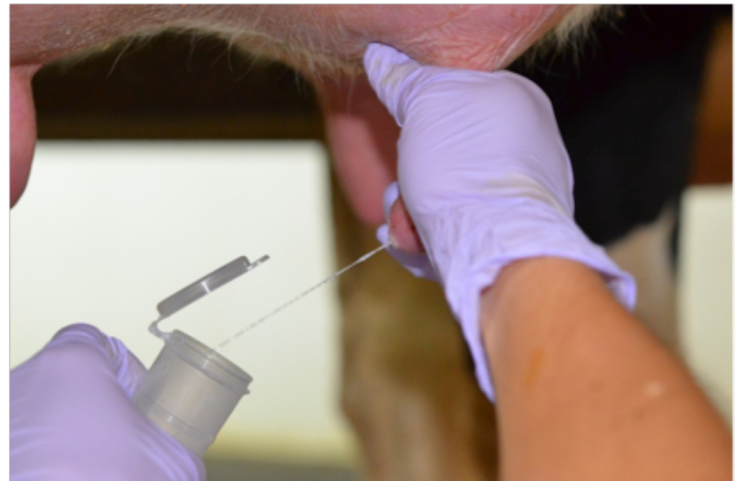
MOST CRITICAL

Scrub end of teat with gauze swab soaked in 70% alcohol.



7

Collect milk sample into the labeled vial. Do not touch any inner part of the vial to avoid contamination of the sample.



8

Immediately cool sample in a cooler or refrigerator until plating can occur.

